

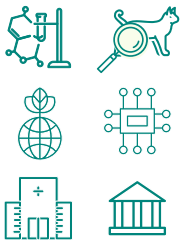
One Health for **One World**

Taking a collaborative multi-disciplinary approach to achieving better health outcomes

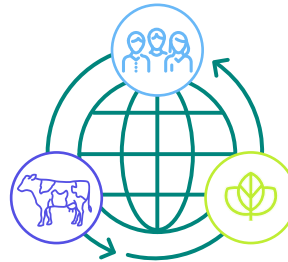


What is **One Health**?

Over the past century, society has undergone many major changes, including those brought about by: **technological innovations, increased mobility, industrialization, urbanization, and globalization.** In many ways, these innovations have advanced human, animal and environmental health, but they have also increased our vulnerability to new health challenges.



The One Health approach is a collaborative multi-sectoral and multi-disciplinary approach to achieve optimal health outcomes. It cannot be done by any singular entity or organization by itself, but instead requires a cooperative effort between multiple sectors of society.



The One Health approach recognizes the interconnection between the health of people, animals, plants and their shared environment.

Why is One Health **Important Now**?



60% of existing **human infectious diseases** stem originally from animals.



Increased environmental disruptions have created new health issues and opportunities for diseases to pass between animals and humans.



A globalized world broadens the spread of diseases. Increase in international movement of humans, animals and animal products has increased the probability and speed of spreading diseases around the globe.

What is **MSD Animal Health Doing**?



Prevention

Producing over 102 billion doses of animal vaccines, making it one of the largest vaccine producers for animals in the world



Surveillance and Monitoring

Committing to advocating for and participating in holistic surveillance monitoring systems to track and predict-health related issues



Innovation

Researching and developing novel vaccines and therapeutics for a broad array of infections



Stewardship of Essential Medicines

Supporting responsible use of antimicrobial medicines to ensure they remain effective treatments



Ensuring a Safe and Sustainable Food Supply

Implementing precision livestock management and traceability initiatives for early disease detection and individualized diagnosis and treatment decisions



Respecting Our Shared Environment

Supporting science-based, environmentally sound international and national programs to address the challenges to environmental health.